

BeautiSealant

Fluoride Releasing Pit & Fissure Sealant System



Official Partner



Minimally Invasive
Cosmetic Dentistry

FLUORIDE RELEASING PIT A DIFFERENCE YOU CAN

BeutiSealant

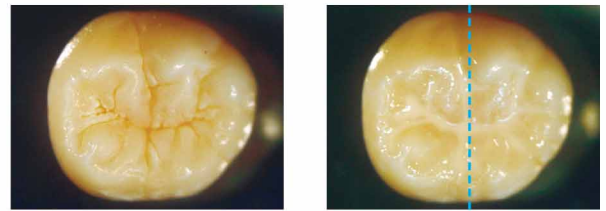
For decades, dentists and hygienists have had no alternative but to use phosphoric acid etching as a necessary evil to improve the bondability of dental sealants. In doing so, they have not only lost countless hours to these laborious steps, but also have inevitably destroyed otherwise healthy tooth structure with the damaging effects of harsh acids.

Driven by modern concepts of Minimally Invasive and Cosmetic Dentistry, and recent developments in adhesives technology, Shofu has created a faster, easier, and gentler sealant system that eliminates the need for phosphoric acid etch and rinse steps entirely, while still maintaining equal or better shear bond strengths.

- High shear bond strength **without phosphoric acid etch or rinse required**
- Ideal handling and viscosity; eliminate voids with bubble-free consistency
- Radiopacity equal to dentin; 0.92 Al:mm
- Unique cariostatic properties of S-PRG fillers
- 30 second application; Four easy steps
- BPA- and HEMA-free

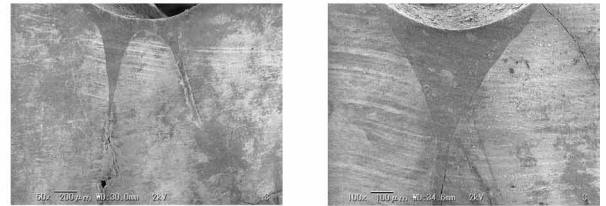
Gentle on Enamel

BeutiSealant is BPA- and HEMA-free with dual adhesive monomers that thoroughly penetrate and prepare pits and fissures for bonding to the sealant. Unlike traditional sealants which require phosphoric acid etching, demineralizing and dehydrating healthy teeth, Shofu's self-etching primer is significantly less acidic helping to preserve healthy tooth structure.



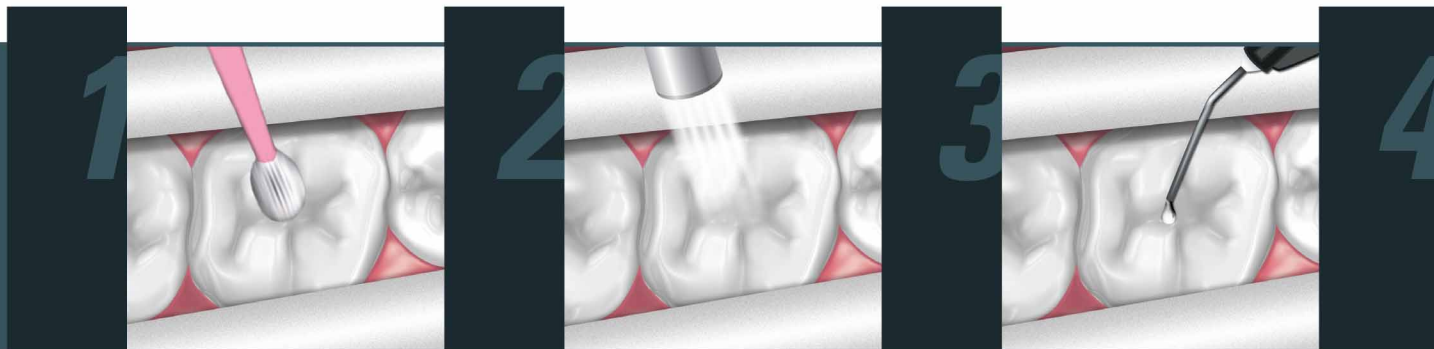
Dr. Satoshi Fukumoto, Tohoku University, Japan

BeutiSealant is an easy to apply sealant optimized for smooth, bubble-free consistency. Achieve precise delivery of up to 100 teeth sealed with our 1.2 gram syringe made possible by our specially designed no-ooze/no-waste syringe, and a fine gauge needle tip.



Dr. Satoshi Fukumoto, Tohoku University, Japan

SEM photos of deep penetration into fissures



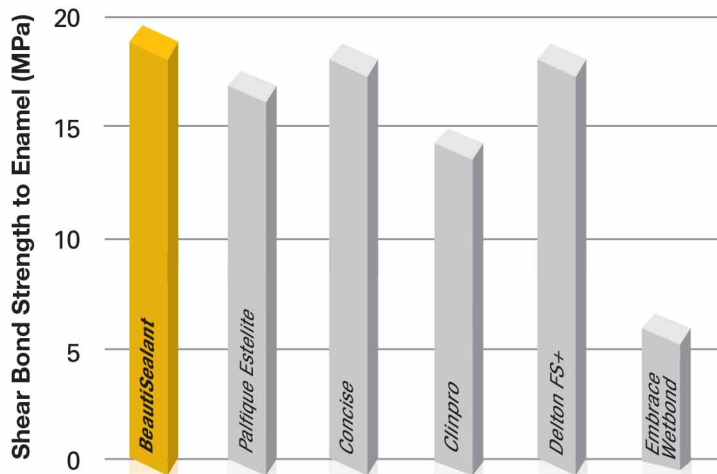
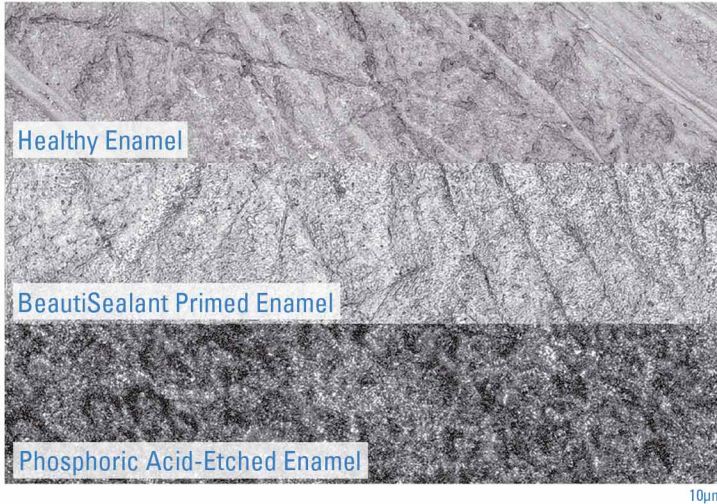
One: Apply **Primer** to clean tooth and leave for 5 seconds.

Two: Gently air dry for 5 seconds.

Three: Apply **Sealant**.

& FISSURE SEALANT SEE!

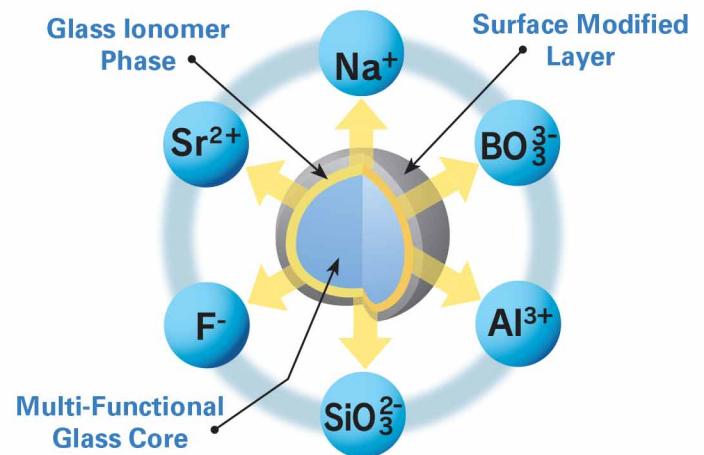
No Acid Etch – A Difference You Can See



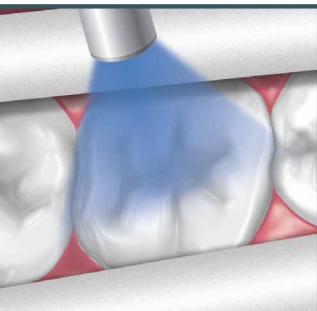
Despite the lack of phosphoric acid etching and a HEMA-free composition, shear bond strengths remain at levels that meet or exceed market leading sealants at 19.5MPa.

What's a Giomer?

Giomer refers to any product containing Shofu's proprietary Surface Pre-Reacted Glass, or S-PRG filler particles. S-PRG filler uniquely releases 6 ions: Fluoride, Sodium, Strontium, Aluminum, Silicate, Borate, all with known bioactive properties. Unlike glass ionomers and compomers which require water absorption following photocure to release fluoride; Giomer's contain a multifunctional glass core that undergoes an acid-base reaction during manufacturing and is subsequently protected by a surface modified layer. This trilaminar structure forms a type of stable glass ionomer which allows ion release and recharge to take place, while protecting the glass core from the damaging effects of moisture, greatly improving long-term durability. With its unique Giomer chemistry, BeautiSealant is therefore able to recharge its fluoride ions from household dental hygiene products such as toothpaste, providing sustained benefits to adjacent tooth structure over the life of the sealant.



Learn more, watch the acid neutralization video.



Four: Light cure with a halogen (20 seconds) or LED (10 seconds) curing light.

PRG
Technology
Giomer

Key Features of Giomer Materials

S-PRG filler material has been clinically shown to:

- Recharge fluoride when treated with fluoridated products
- Decrease acid production of cariogenic bacteria
- Neutralize acid on contact
- Demonstrate an anti-plaque effect